

bilz

THE NEW

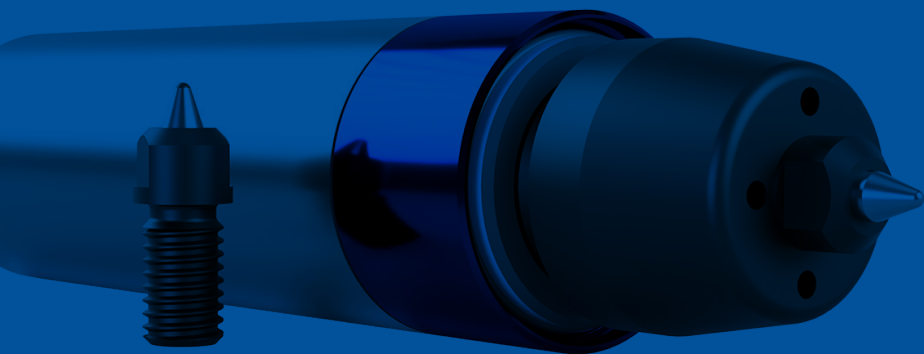
ENGRAVING CHUCK

Engraving on almost all surfaces

雕刻刀柄 可適用於幾乎所有工件表面上



Installation on
any machine interface
可安裝在任何設備上



Rolling generates less lateral forces meaning that the bearing load on your machine is considerably reduced.

因為滾動產生的側向力較小，這意味著作用於機器上的軸承負荷會大大降低

Examples:



Plastic
塑膠



Aluminum
鋁

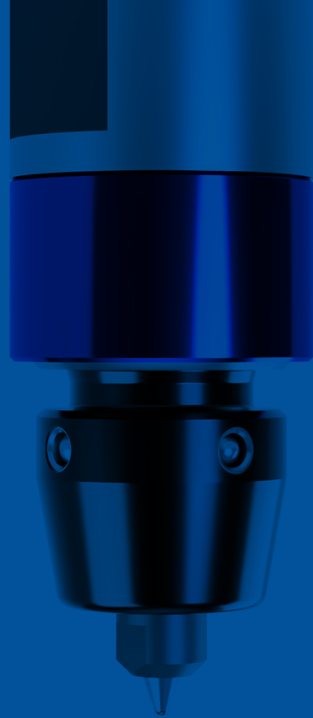


Steel
鋼



Features of our engraving chuck 雕刻刀產品特性

- 可用於多種材質如塑膠/ 鋁/ 鋼(最高可加工硬度達HRC57)
- 可依加工材料硬度/雕刻深度做調節
- 透過調整螺絲調整預設壓縮量，最大可調量達5mm
- 透過壓縮空氣流清潔工件表面-無需冷卻液
- 可用彈簧筒夾和側固刀柄夾持
- 緊湊設計可適用各種不同場合
- 雕刻筆頭工作部分採用高耐磨性滾珠
- 透過更換雕刻筆頭減低成本
- 雕刻筆頭更換方便
- 可調式雕刻不均勻度



For almost any material plastic, aluminum or hardened steel (max. 57 HRC)

適用多種材料如塑料、鋁、淬硬鋼
最高可加工硬度HRC57

Advantages 優勢

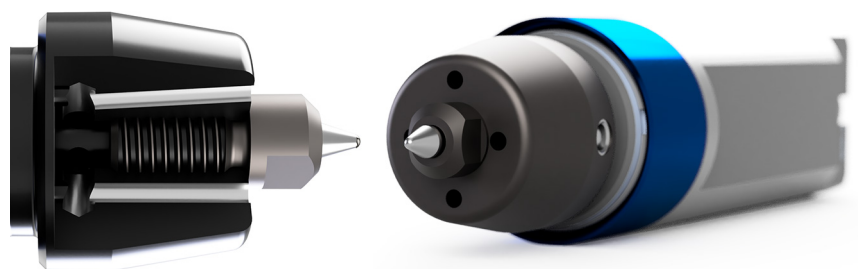
- Compressed air channels with different angle settings
- Adjustable engraving hardness (engraving depth)
- Rolling generates lower lateral forces
- Font width is adjusted (to a certain extent) by the pressing force, not by different points
- Compact design
- Simple and quick change of the engraving point
- Tool holder Ø 20 mm collet/Weldon holders

Benefits 好處

- Cleaning of the work piece
- Engraving on almost any surface, on different materials - plastic / aluminum / steel (max. 57 HRC)
- Small bearing load on the machine – longer life
- Various font depths possible
- Covers almost any task
- Quick tool change
- Installation on any machine interface

Cleaning with compressed air

Due to the specifically targetted compressed air channels around the engraving point, our engraving chuck achieves excellent cleaning results – even with fine chips.



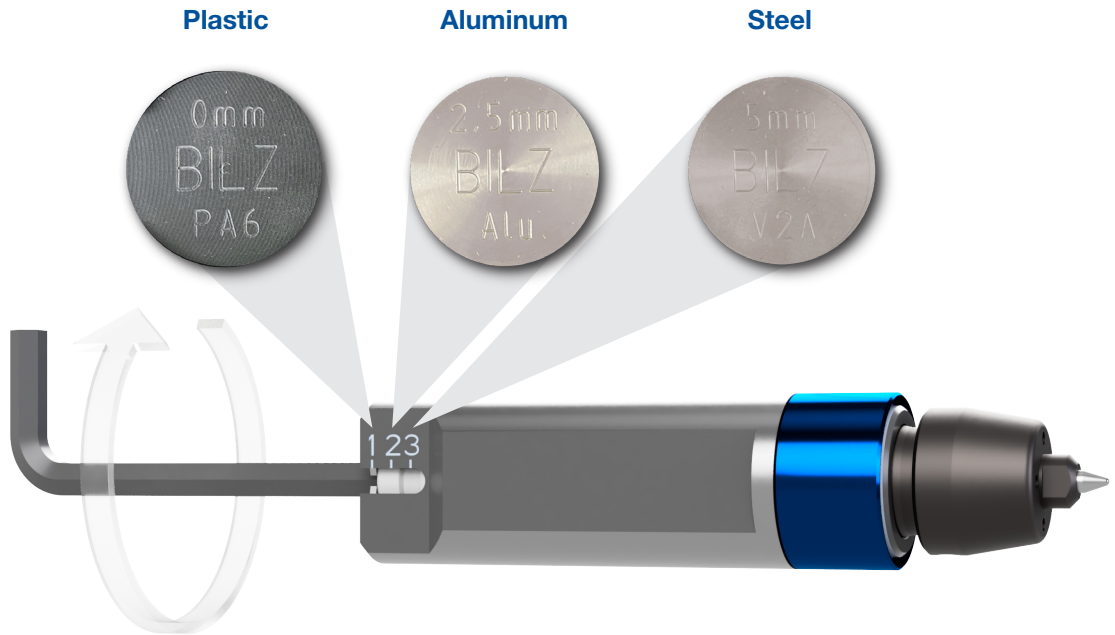
- Long life
- No damage or weakening of the surface
- No burr formation
- Marking of sandblasted surfaces with a hardness of up to 57 HRC possible
- Quick and silent engraving during the production process
- Can be changed like a normal tool
- For all standard holders and materials

ET0



Our offer to you consists of the ET0 engraving tool and the engraving point.

ET0	Description	Ident No.	Design
Gravierwerkzeug	ET0-36-K1-Z2000	5175473	
Engraving tip set 3 piece	ET0-M5-4B-S	5205269	



Adjustment and Forces

Material	Presetting	Infeed	Engraving force
Plastic	0 mm	1,0 mm	~ 50 N
Aluminum	2,5 mm	1,0 mm	~ 80 N
Steel max. 57 HRC	5,0 mm	1,0 mm	~ 110 N





**BILZ WERKZEUGFABRIK
GmbH & Co. KG**
Vogelsangstr. 8
73760 Ostfildern
Deutschland / Germany
Telefon +49 711 348 01 - 0
Telefax +49 711 348 12 56
info@bilz.de
www.bilz.de



台北 02-2703-0193
台中 04-2463-6890
www.gcarbideool.com



*Produktions- und Vertriebsstandorte der LEITZ-Group
Production and sales locations of the LEITZ Group*

- **Bilz**
- **Boehlerit**
- **Leitz**